

## **Version 3**

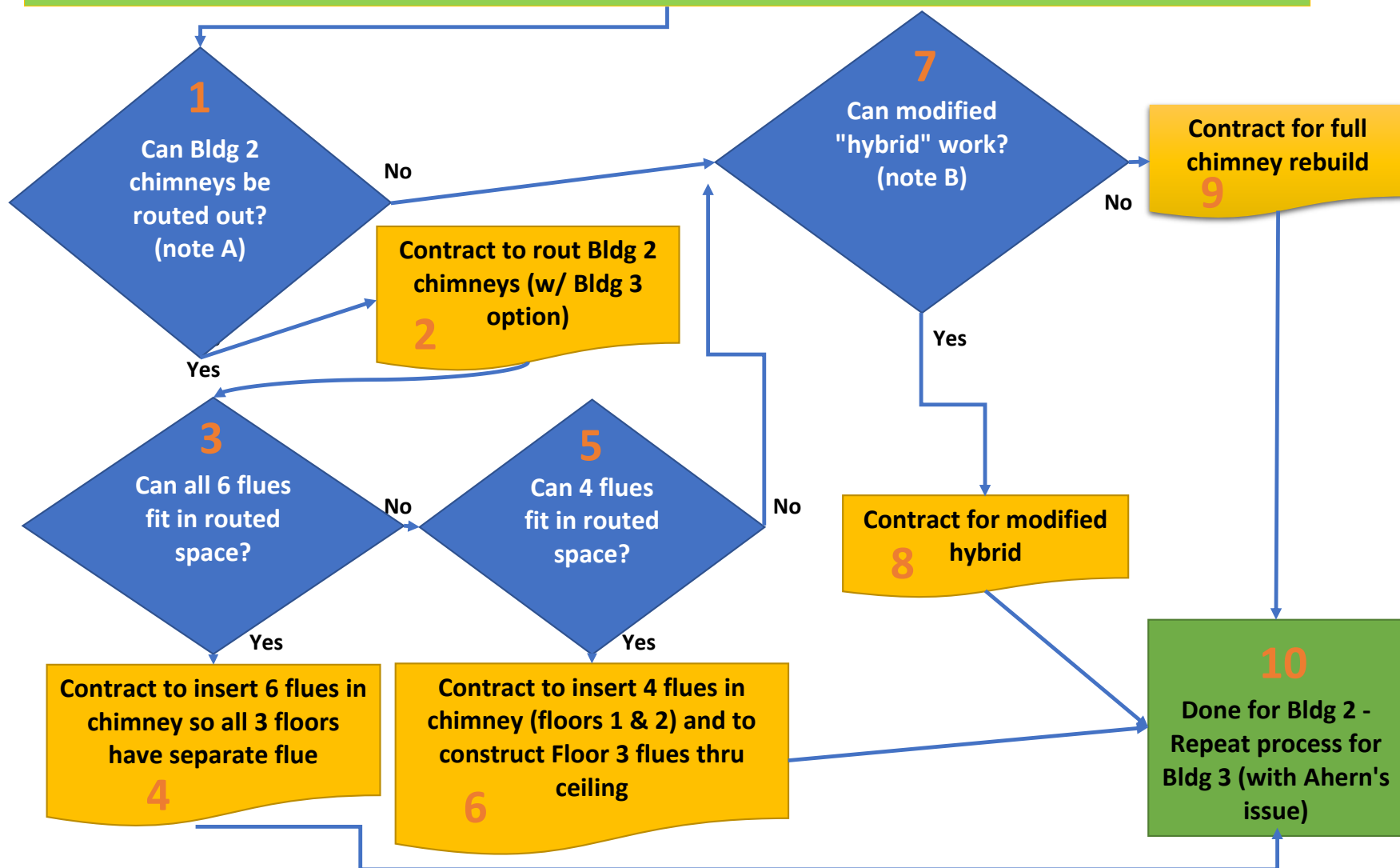
**Resolution of the fireplace issue for Buildings 1-4 consists of three different issues**

- 1 - Need for separate flues instead of existing common flue in Buildings 2 & 3)**
- 2 - Thimble connection/code issues (Buildings 1-4)**
- 3 - Stove clearance distances to combustibles (Buildings 1-4)**

**Full details of these issues can be found in the 2022 Annual Meeting Minutes sent to all owners via Forest Glen Property Management email of 23 Nov 2022. The email can also be found on the web at [www.northfaceresort.com](http://www.northfaceresort.com) (Click "worth Knowing" and then "Correspondence")**

**The following pages contain flow charts of actions to resolve each of the three issues**

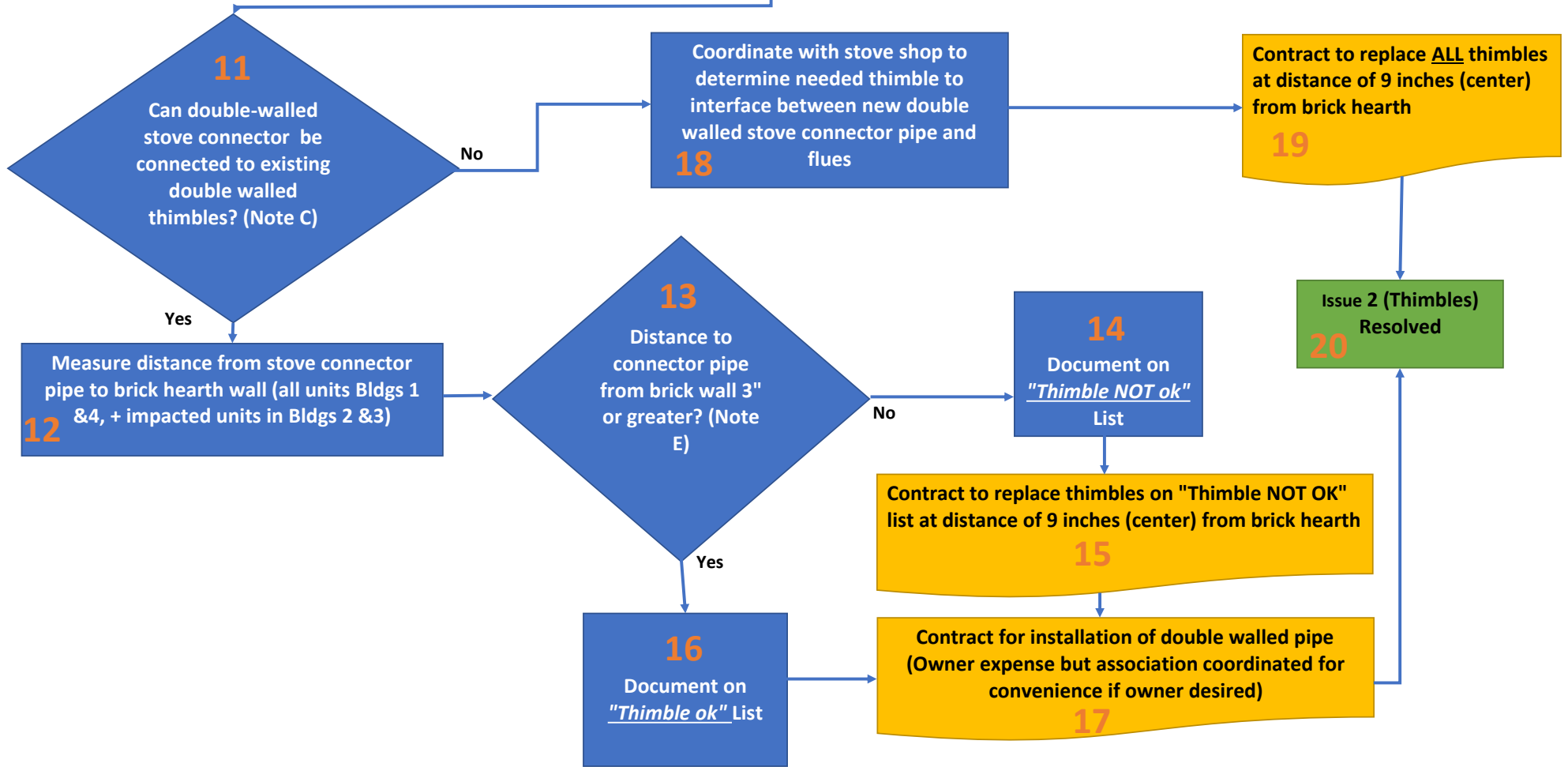
# Issue 1: Chimney and Flues (see separate flowcharts for issues 2 & 3)



Note A: Could start as early as Feb 2023 (This being the month Szetella would rebuild so this should be possible for a lesser effort)

Note B: Variation of the original hybrid. In this case, floor 2 uses existing chimney. Floor 3 goes thru ceiling. Floor 1 uses (now empty) chimney space to extend thru existing chimney and with the flue then running up the chimney exterior before entering the ceiling at the 3rd floor

## Issue 2: Thimbles (see separate flowcharts for issues 1 & 3)



Note C: This to be determined working with qualified stove shop. The answer to this question is yes, as this configuration already exists at Northface. This conversation should only take place with the chimney committee and management all in attendance. The question needs to be posed 'How do we do this' ve 'can we do this'. This is key as many of these parameters are subjective. Remember, the fire Department that issued the current "no-burn" order also approved use back in 2005. And the Chimney company which reported the code violation also gave Northface a clean bill of health in 2010. The association has done due diligence in showing there is no evidence of pyrolysis via the selective demolition of a unit. Thus since we are in full accordance with code and safety requirements, this approach should be possible.

Note D: Important to do before any thimble construction is addressed - this being a key point raised at the 22 Aug 2022 Board telecon with Bergeron Technical Services. The point being while all seems to be comprehensive and in order, the final authority is the Fire Department and thus the approach should be coordinated before work begins

Note E: In review of code with Bergeron Technical Services, the distance, the code requires 18 inches of clearance. However, the code allows a 66 2/3% reduction (to 6 inches) if a 'double walled' pipe is used. The distance is from the pipe to combustibles. The combustible is the wood stud. So the 6 inches = 0.5 inch (Drywall) + 2.5 inch (Brick) + 3 inch clearance to brick - 6 inches

### Issue 3: Stove Clearances (see separate flowcharts for issues 1 & 2)

